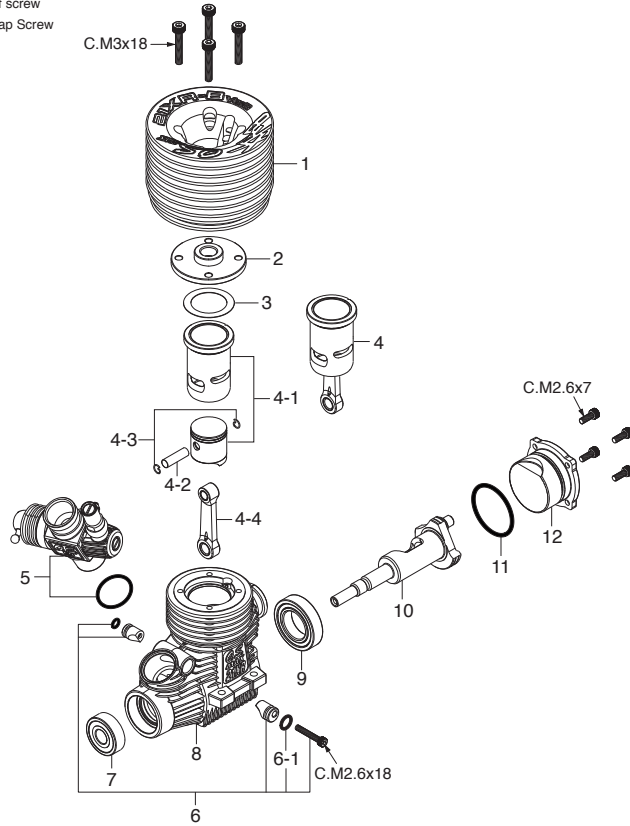


MAX-21XR-BVer.II ENGINE EXPLODED VIEW

*Type of screw
C...Cap Screw



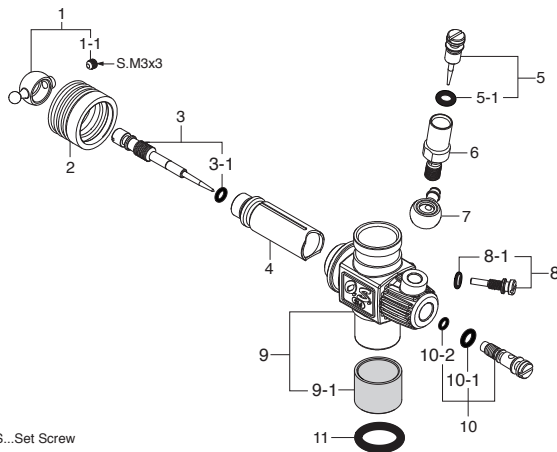
ENGINE PARTS LIST

No.	Code No.	Description
1	2AW04000	Outer Head
2	22204010	Inner Head
3	22014160	Head Gasket Set (0.2mm)
4	22203010	Built-up Parts Set
4-1	22203000	Cylinder & Piston Assembly
4-2	22016000	Piston Pin
4-3	21817000	Piston Pin Retainer 4mm (2pcs.)
4-4	23605012	Connecting Rod w/piston pin retainers (3pcs.)
5	2AW81000	Carburetor Complete (Type 21J3-I)
6	23981740	Carburetor Retainer Assembly
6-1	24881824	"O" Ring (2pcs.)
7	23731020	Crankshaft Ball Bearing (Front)
8	2AW01000	Crankcase
9	23730020	Crankshaft Ball Bearing (Rear)
10	2AW02000	Crankshaft
11	23107100	Cover Gasket
12	22417100	Cover Plate
	71641300	Glow Plug P3
	71533272	Carburetor Reducer 7mm (Yellow) w/ "O" Ring (2pcs.)
	22615000	"O" Ring (1pc.)
	71533000	Carburetor Reducer 8mm (Red) w/ "O" Ring (2pcs.)
	22615000	"O" Ring (1pc.)
	22826140	Exhaust Seal Ring (2pcs.)

CAP SCREW SETS (10pcs./set)

Code No.	Size	Pcs. used in an engine
79871020	M2.6x7	Cover Plate Retaining Screw (4pcs.)
79871055	M2.6x18	Carburetor Retainer Retaining Screw (1pc.)
79871180	M3x18	Cylinder Head Retaining Screw (4pcs.)

CARBURETOR EXPLODED VIEW



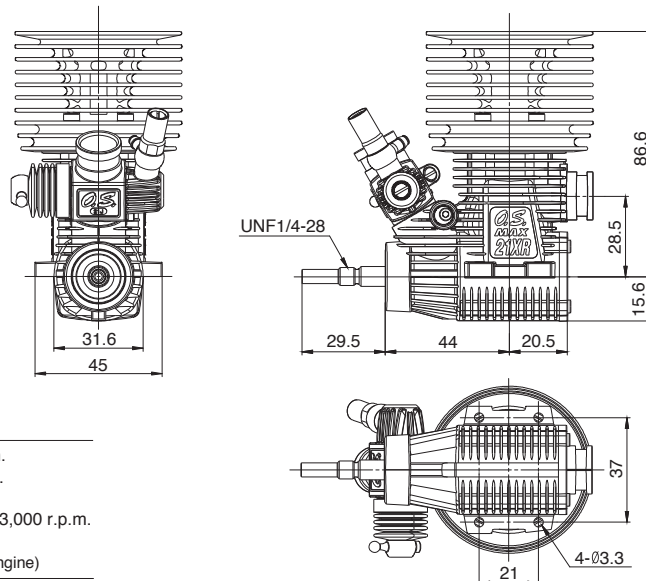
*Type of screw
C...Cap Screw S...Set Screw

CARBURETOR PARTS LIST

No.	Code No.	Description
1	23781400	Ball Link No.3
1-1	26381501	Retaining Screw
2	23981520	Dust Cover
3	23818340	Metering Needle Assembly
3-1	27881820	"O" Ring (2pcs.)
4	22848210	Slide Valve
5	23618197	Needle Assembly
5-1	46066319	"O" Ring (2pcs.)
6	22082940	Needle Holder Assembly
7	22082960	Fuel Inlet (No.16)
8	22848160	Throttle Stop Screw
8-1	27881820	"O" Ring (2pcs.)
9	2AW81100	Carburetor Body (w/Thermo Insulator)
9-1	2AN81101	Thermo Insulator
10	23781600	Mixture Control Valve Assembly
10-1	46066319	"O" Ring (L) (2pcs.)
10-2	22781800	"O" Ring (S) (2pcs.)
11	29015019	Carburetor Rubber Gasket

THREE VIEW DRAWING

Dimensions (mm)



SPECIFICATIONS

Displacement	3.49 cc / 0.213 cu.in.
Bore	16.27 mm / 0.641 in.
Stroke	16.8 mm / 0.661 in.
Output	2.45 ps / 2.42 hp / 33,000 r.p.m.
Practical R.P.M.	4,000-40,000 r.p.m.
Weight	380 g / 13.40 oz. (Engine)

O.S. ENGINES MFG.CO.LTD.

6-15 3-Chome Imagawa Higashisumiyoshi-ku
Osaka 546-0003, Japan TEL. (06)6702-0225
http://www.os-engines.co.jp FAX. (06)6704-2722